

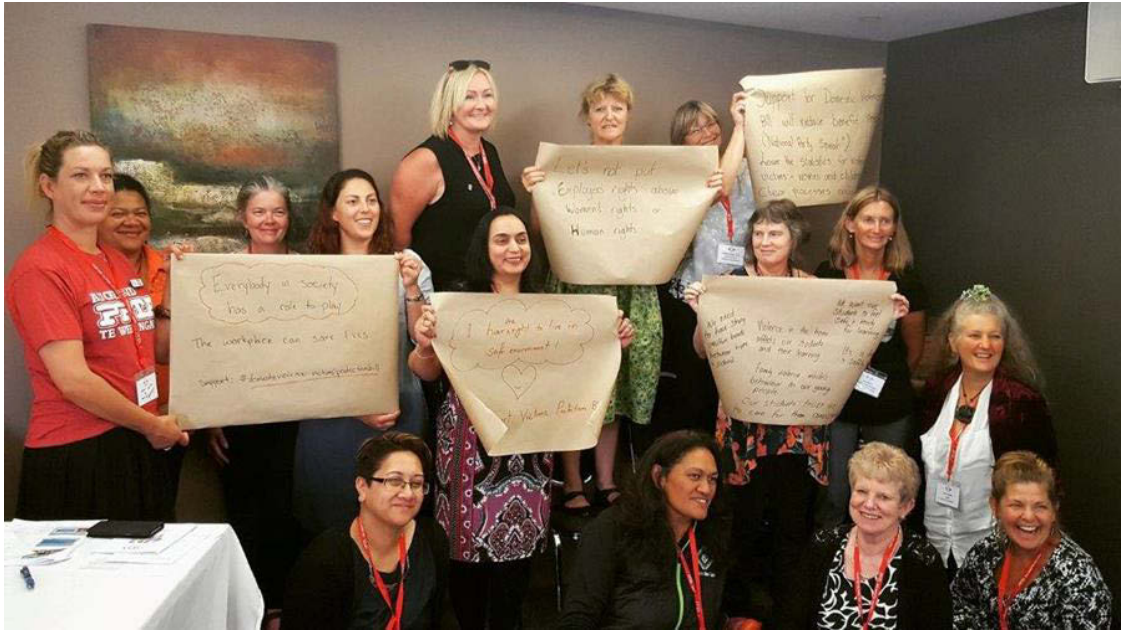


## **Welcome to the new look PPTA women's network newsletter**

Welcome to the first issue of the PPTA Women's Network newsletter for 2017. You are receiving this newsletter because you are part of the women's network or have indicated you would like to be more involved.

The women's structure of PPTA provides a forum for women members to raise, discuss and promote their issues and aims at branch, regional and national levels.

## **Have your say - a chance to help keep victims of domestic violence safe**



*PPTA regional women coordinators and executive member campaigning for more rights for victims of domestic violence*

PPTA has been working hard to ensure that parliament has voted unanimously to send the Domestic Violence Victims' Protection Bill to select committee so the public can talk to MPs about the important support that is needed for victims of domestic violence.

We were successful!

This was the outcome of a collective organised campaign with other trade unions, academics, businesses, refuge groups and NGOs (such as the National Council of Women). The next goal for the PPTA Women's Network and the broader coalition is for the bill to be passed into law.

### **What is the bill about?**

The two key changes in the bill are:

To allow up to 10 days paid leave for victims of domestic violence (DV) to respond to the effects of domestic violence (e.g. moving house or attending a court hearing for a protection order) and

Amending the Human Rights Act 1993 to add DV as a prohibited ground of discrimination.

PPTA will be making a submission on the bill and we invite you to make an individual one too. As teachers, you will see the benefit that this may have for kids' learning if parents are able to access this support, and for yourself or colleagues who may be victims of domestic violence.

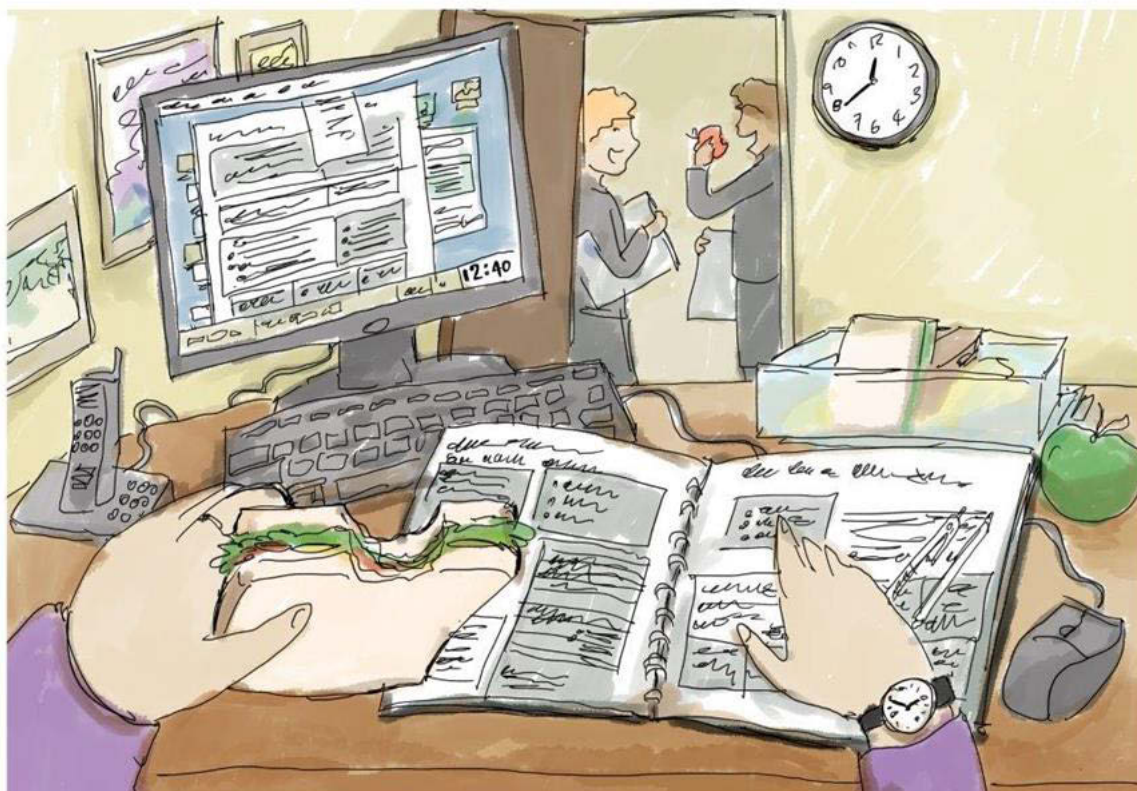
[Read the domestic Violence - Victims' Protection Bill online](#)

**Submissions are due on 28 April**

PPTA National Women's Officer Eva Hartshorn-Sanders is available to answer any questions you may have about the bill and next steps in the campaign.

[EHartshorn-Sanders@ppta.org.nz](mailto:EHartshorn-Sanders@ppta.org.nz)

## Strategic goals for PPTA's Women's Network



The PPTA National Women's Network set the following strategic goals for 2017:

- Campaigning on extending paid parental leave (including for partners), domestic violence leave, and equal pay
- Supporting members who work part-time to achieve pro-rata non-contact time
- Helping to ensure that the only fixed-term contracts that apply to PPTA members are legal ones
- Knowing your rights in the collective agreements (including encouraging members to attend Mahi Tika training)
- Supporting women in leadership roles in teaching
- Speaking to MPs during the election campaign about education priorities for PPTA and the issues of women outlined above

**NZCTU Women's Conference - register now**

Working women from around NZ will be meeting in Wellington in the July holidays (14-15 July) to discuss the big campaigns and issues for women workers and to network with women from around the union movement. There will be a lot of inspiring speakers and the workshops will focus on skills development.

The theme is likely to be mana wahine. If you are interested in coming along, then email [EHartshorn-Sanders@ppta.org.nz](mailto:EHartshorn-Sanders@ppta.org.nz) for more information.

## Updated guidance on parental leave and payments



PPTA has updated its guidance for members on their entitlements to parental leave and payments under both the collective agreements and the legislation. You can find it on our website.

[Parental Leave: Guidance to your employment rights](#)

## Become a branch women's contact

Branch women's contacts are the first port of call for women members in branches. They are elected annually in PPTA branches and are essential because they understand the politics and pressures impacting on women teachers within your school. You can find out about the position on the Women's Network community page of the PPTA website.

## [Information about the branch women's contact](#)

If you are interested, support is available from you regional women's coordinator, the national women's officer, your local field officer and your branch team.

## Your regional women's network contacts

### **National Women's Officer**

*Eva Hartshorn-Sanders*

[EHartshorn-Sanders@ppta.org.nz](mailto:EHartshorn-Sanders@ppta.org.nz)

### **Northland Upper**

Esther Van Dyke

[evd@boic.school.nz](mailto:evd@boic.school.nz)

### **Aoraki**

Lisa Holden

[lisah@mackcollege.school.nz](mailto:lisah@mackcollege.school.nz)

### **Otago**

Jennifer Ashby

[jra@lphs.school.nz](mailto:jra@lphs.school.nz)

### **Auckland**

Freddie Simpson

[simpsonf@wsc.school.nz](mailto:simpsonf@wsc.school.nz)

### **Southland**

Barbara Williams

[bwilliams@menzies.school.nz](mailto:bwilliams@menzies.school.nz)

### **Bay Of Plenty**

Vacant

### **Taranaki**

Yomi Williams

[ywilliams@npghs.school.nz](mailto:ywilliams@npghs.school.nz)

### **Canterbury**

Bernie Lee

[blee@stc.school.nz](mailto:blee@stc.school.nz)

### **Waikato**

Jacqueline Smith

[jsmith@wdsq.school.nz](mailto:jsmith@wdsq.school.nz)

### **Central Plateau**

Aletta Lamprecht

[aletta.lamprecht@taupocollege.ac.nz](mailto:aletta.lamprecht@taupocollege.ac.nz)

### **Wairarapa**

Vacant

### **Counties-Manukau**

Gurpreet Kaur

[kr@manurewa.school.nz](mailto:kr@manurewa.school.nz)

### **Wellington**

Vacant

### **East Coast** (jointly held)

Beverley McDonnell

[bev.mcdonnell@gghs.school.nz](mailto:bev.mcdonnell@gghs.school.nz)

Elizabeth Brown

[liz.brown@gghs.school.nz](mailto:liz.brown@gghs.school.nz)

### **West Coast**

Vanessa Pringle

[vepringle@gmail.com](mailto:vepringle@gmail.com)

### **Western Bay Of Plenty**

Ray Ryan

[rachel.ryan@tepuke.school.nz](mailto:rachel.ryan@tepuke.school.nz)

### **Hauraki Coromandel**

Juliette Emery

[juliette.emery@gmail.com](mailto:juliette.emery@gmail.com)

### **Hutt Valley**

Vacant

**Hawkes Bay**

Amanda Greville

[ge@hastingsgirls.com](mailto:ge@hastingsgirls.com)

**Manawatu-Whanganui**

Vacant

**Marlborough**

Amanda Ellwood

[amandae@mbc.school.nz](mailto:amandae@mbc.school.nz)

**Nelson**

Anna Heinz

[anna.heinz@ncg.school.nz](mailto:anna.heinz@ncg.school.nz)

**Northland Central**

Fiona Pope (Churcher)

[f.churcher@wbhs.school.nz](mailto:f.churcher@wbhs.school.nz)

**Northland Lower**

Fiona Cooper

[fcooper@darghigh.school.nz](mailto:fcooper@darghigh.school.nz)

**Executive member**

Joe Hunter

[joe.hunter@otagogirls.school.nz](mailto:joe.hunter@otagogirls.school.nz)

**Field Officer**

Adele Towgood

[atowgood@ppta.org.nz](mailto:atowgood@ppta.org.nz)

**Te Huarahi**

Hana Wijohn

[hanawijohn@gmail.com](mailto:hanawijohn@gmail.com)

**Komiti Pasifika**

Maria Lemalie

[mel@shirley.school.nz](mailto:mel@shirley.school.nz)

## PPTA Women Facebook page

The PPTA Women Facebook page is available for you to stay in touch with topical issues that are arising for women and teachers in New Zealand and overseas. We encourage you to “like” and share with women teachers in your branch. A link directly to the page is connected to the icon below.

[Visit the PPTA Women facebook page](#)

## Help spread the word

You have received this email newsletter because we have the correct email details for you in our database. Please check with other women members to ensure they have received the newsletter. If they are not members, encourage them to join.

If you know someone you think would like to receive this newsletter they can email Wendy Daniell ([wdaniell@ppta.org.nz](mailto:wdaniell@ppta.org.nz)) to be added to the list.



Post Primary Teachers' Association

Level 5, 60 Willis Street

Wellington

You are receiving this email because you are a member of the PPTA women's network.

[Preferences](#) | [Unsubscribe](#)

